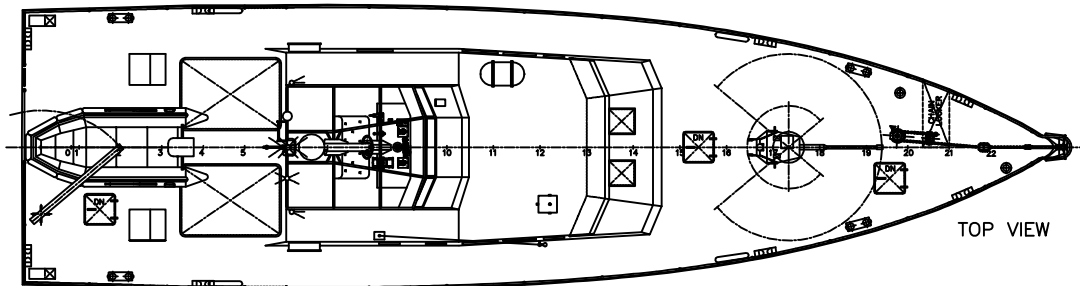
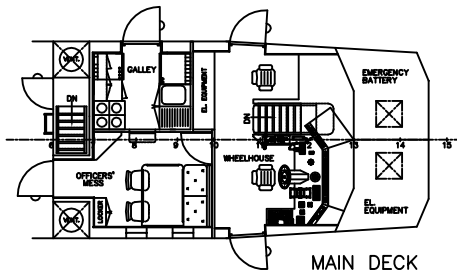


OUTBOARD PROFILE



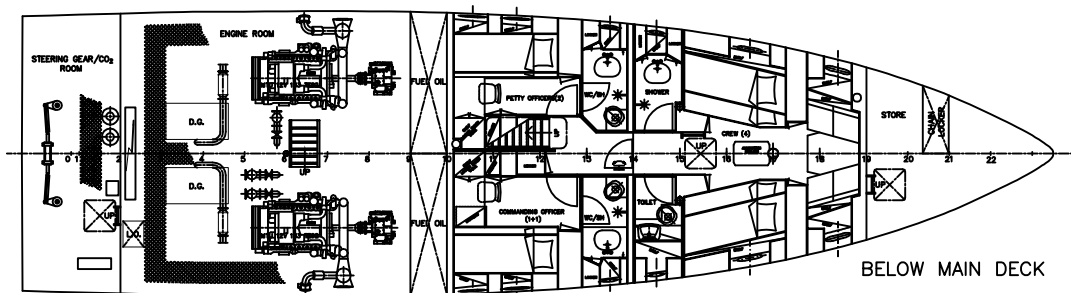
TOP VIEW



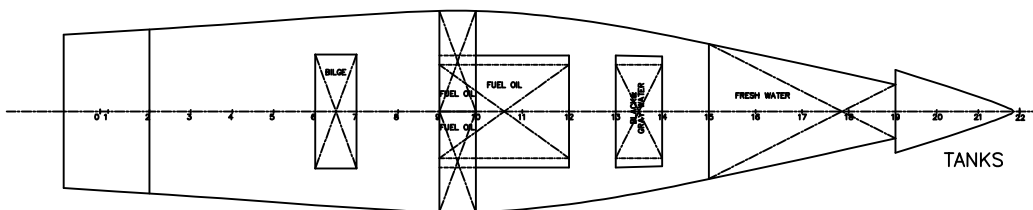
MAIN DECK

MAIN PARTICULARS:

LENGTH OVER ALL	19.91 m
BREADTH MOULDED, MAX	5.50 m
DEPTH AMIDSHIPS AT SIDE	3.13 m
DESIGN MEAN DRAUGHT (HALF LOAD)	1.36 m
DRAUGHT OVER PROPELLERS (HALF LOAD)	1.46 m, abt.
DRAUGHT OVER PROPELLERS (FULL LOAD)	1.55 m, abt.
MAIN ENGINES	2x735 kW
MAX SPEED AT HALF LOAD	2300 rev/min
	24.5 kn



BELOW MAIN DECK



TANKS

Patrol Boat 20 m

GUINEA BISSAU

This document is our exclusive property. It must not be reproduced or used in any way without our prior permission in writing.

APPROVED	D C B A	TEHNOMONT SHIPYARD "PULA"	PROJECT NO.: SM 9403/02
	GENERAL ARRANGEMENT PLAN		SCALE: DATE: 1:50 05.2003
	SIMTEC MARINE DESIGN, ENGINEERING, CONSULTING		CONSTR.: CHECK:
			DRWG NO.: 101-002
		SHEET: 1	SHEETS: 1