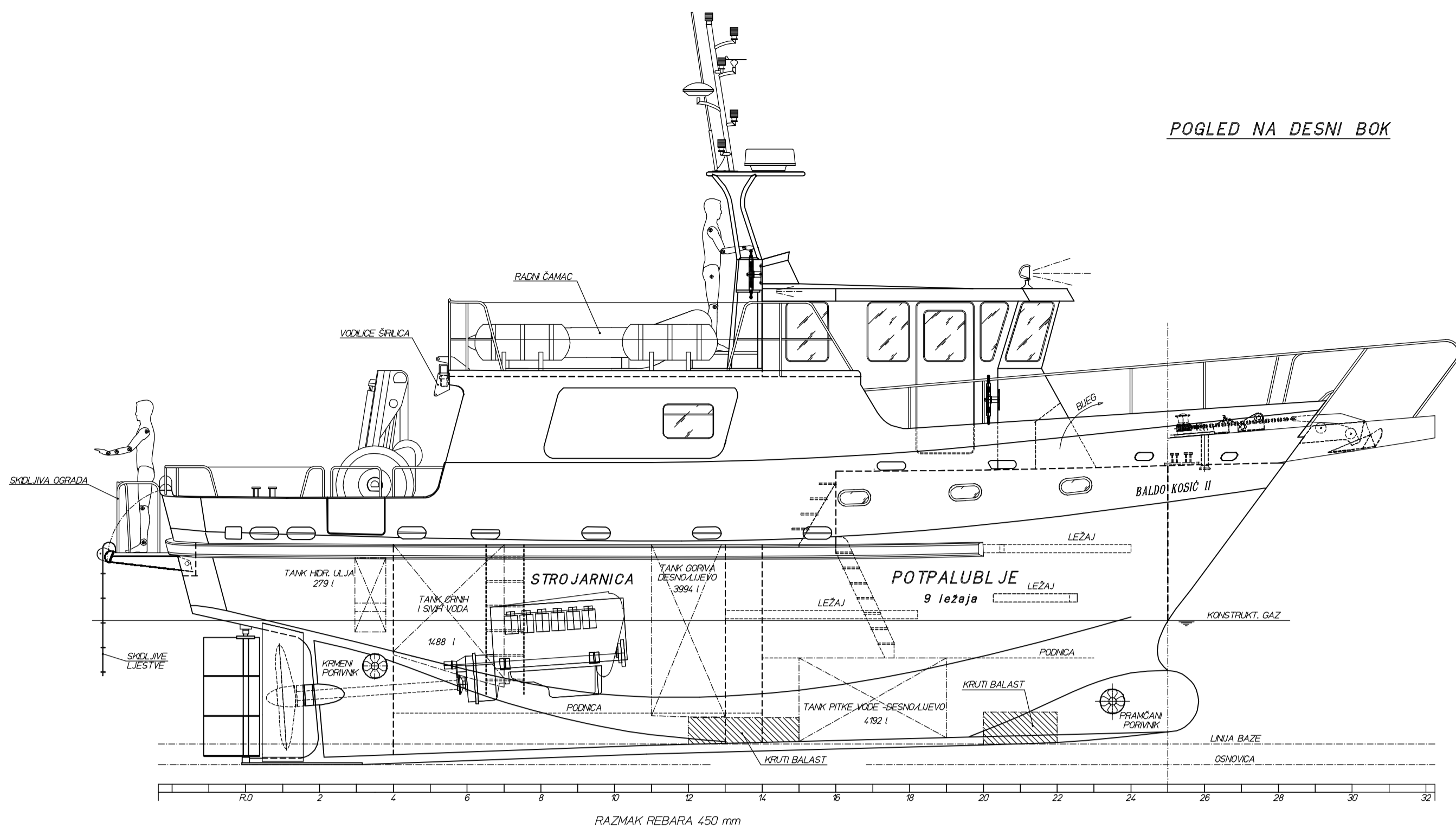
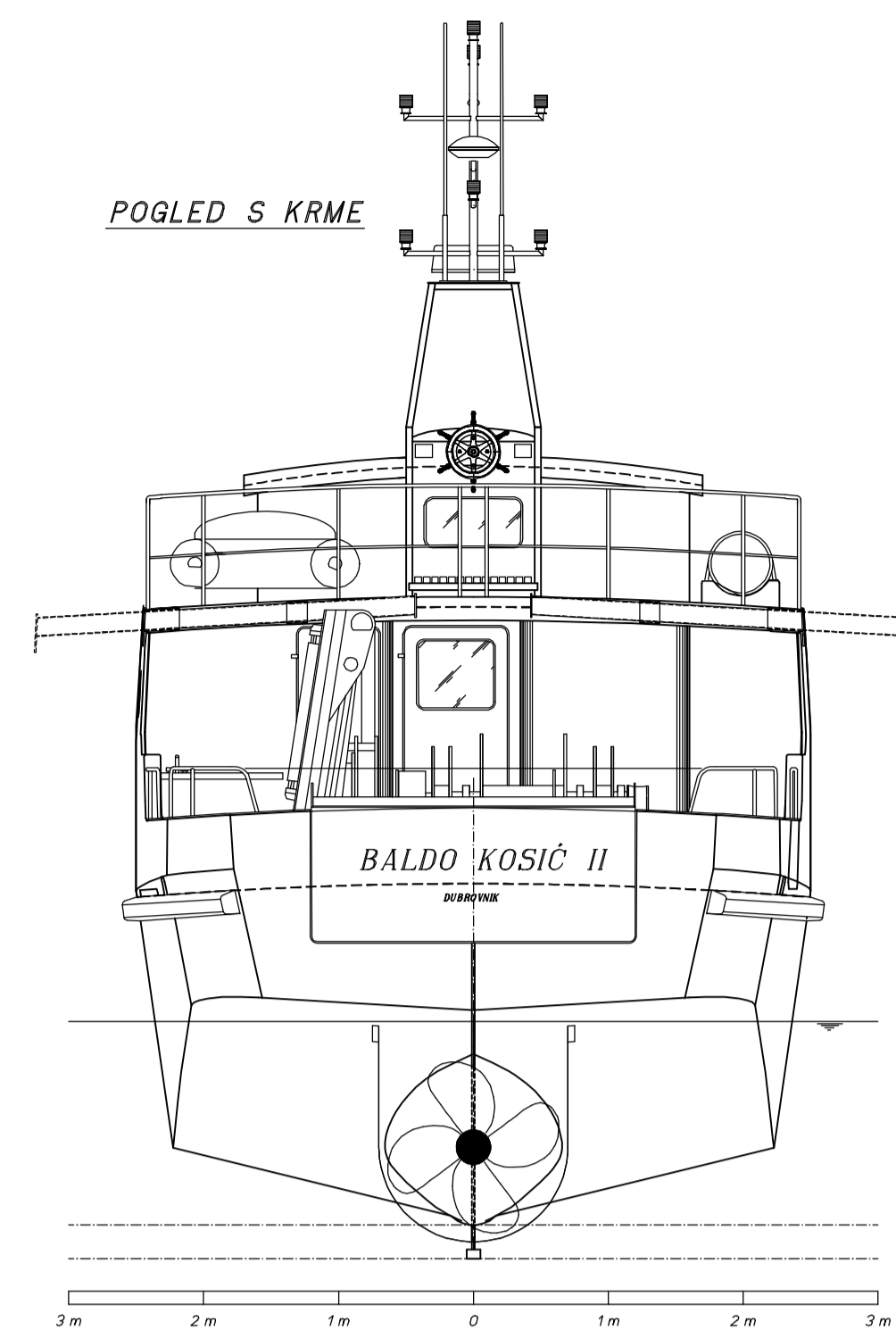


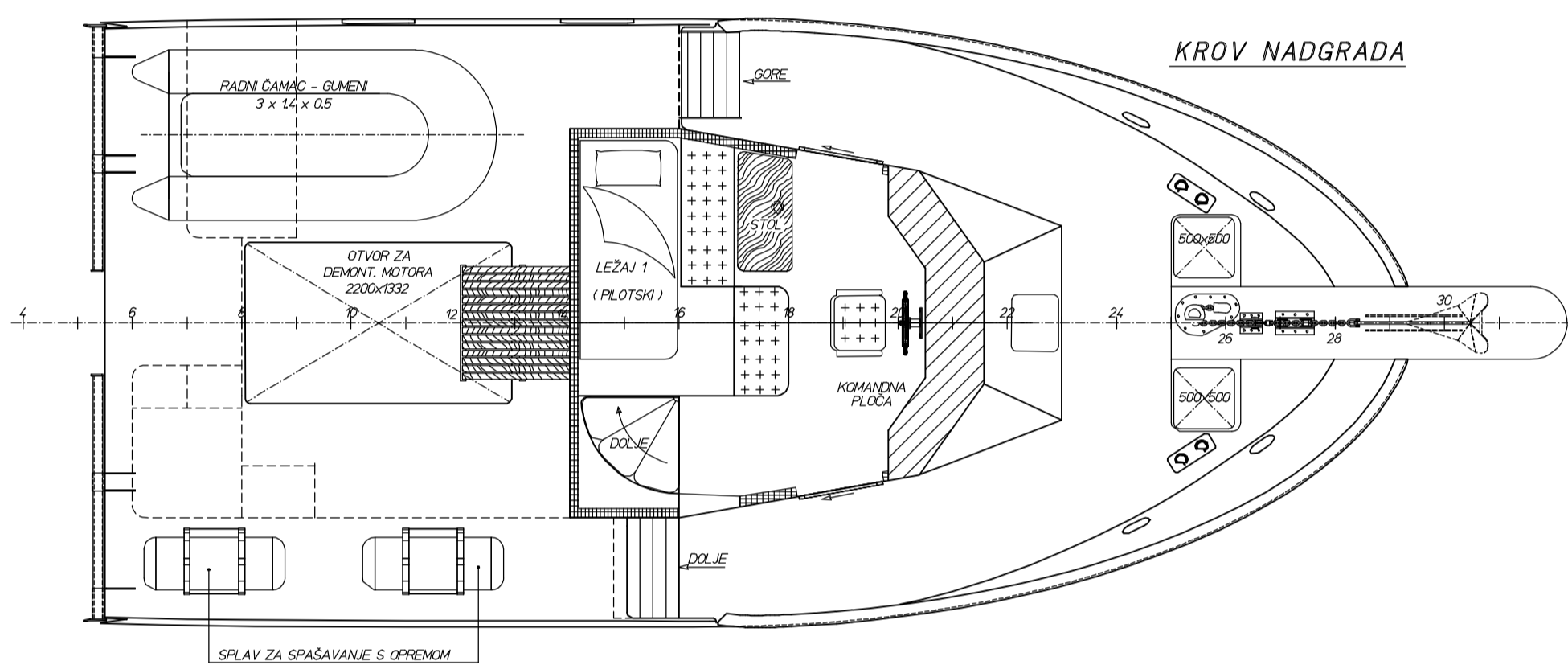
POGLED NA DESNI BOK



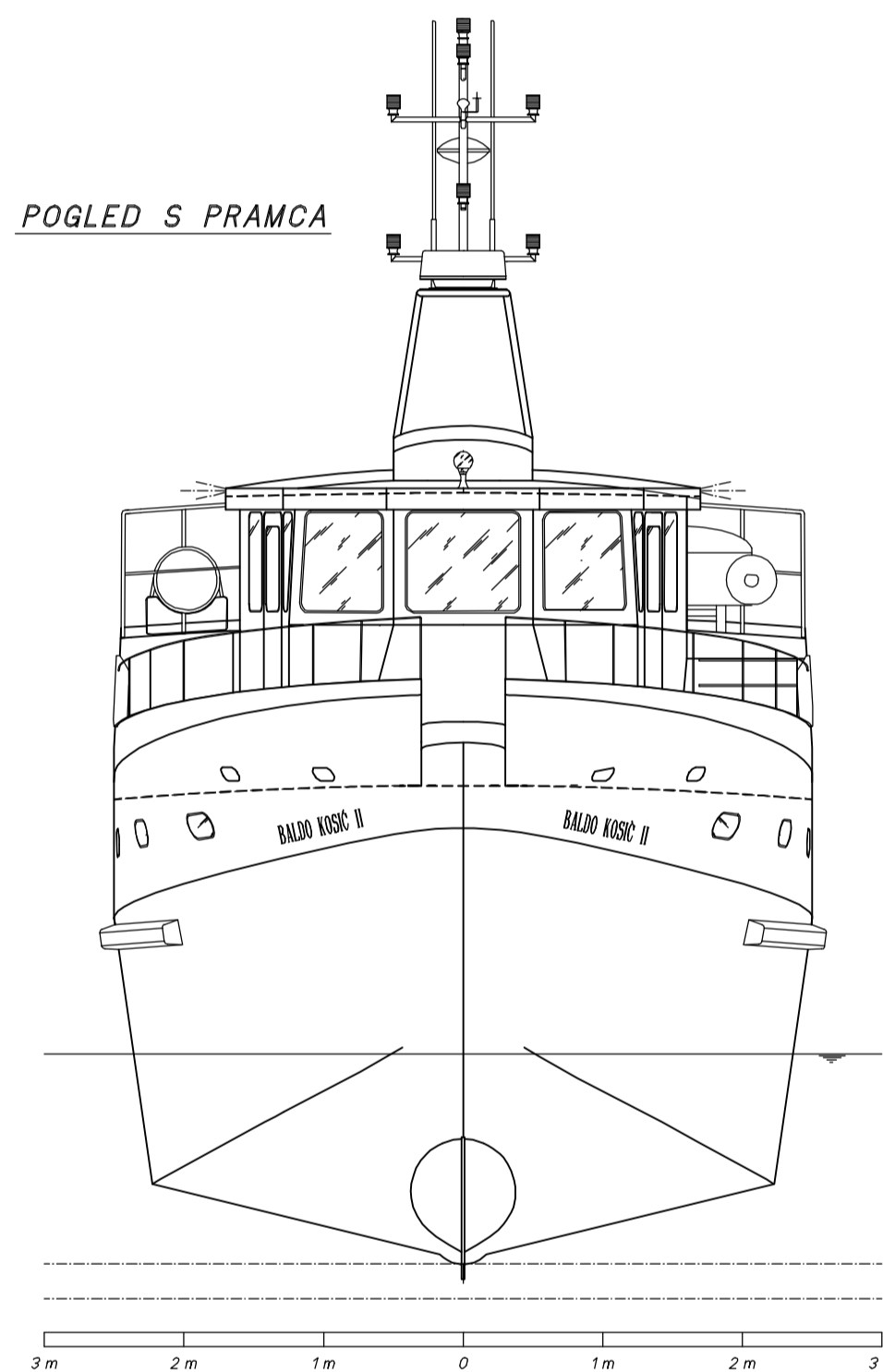
POGLED S KRME



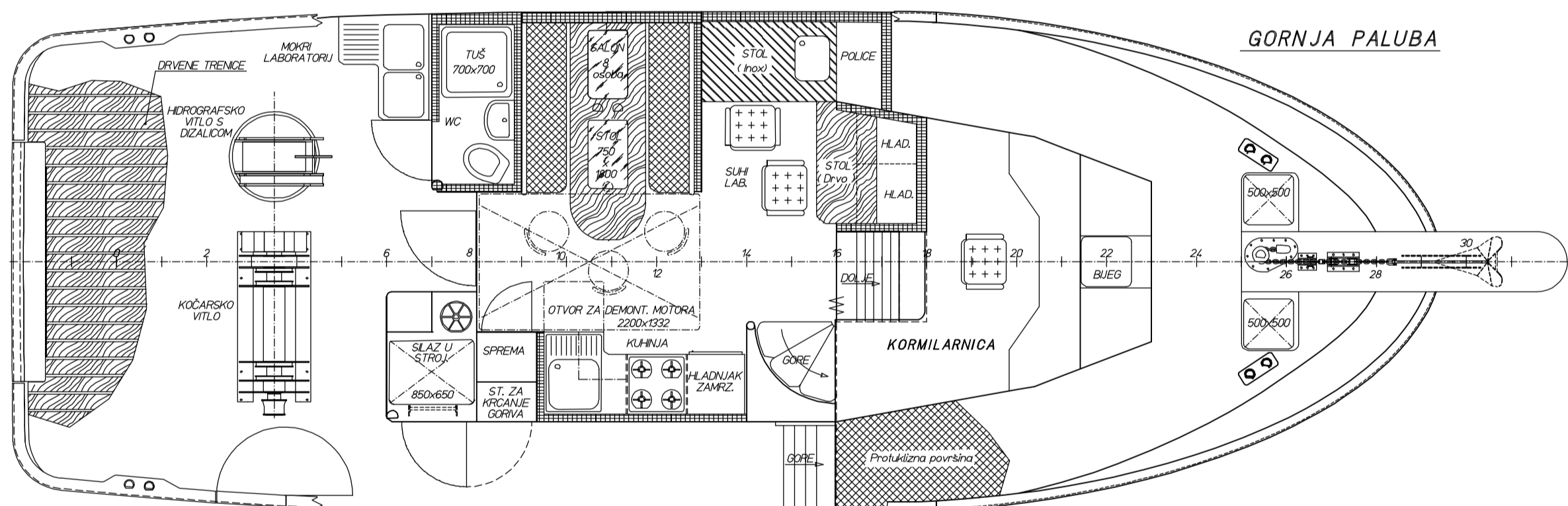
KROV NADGRADA



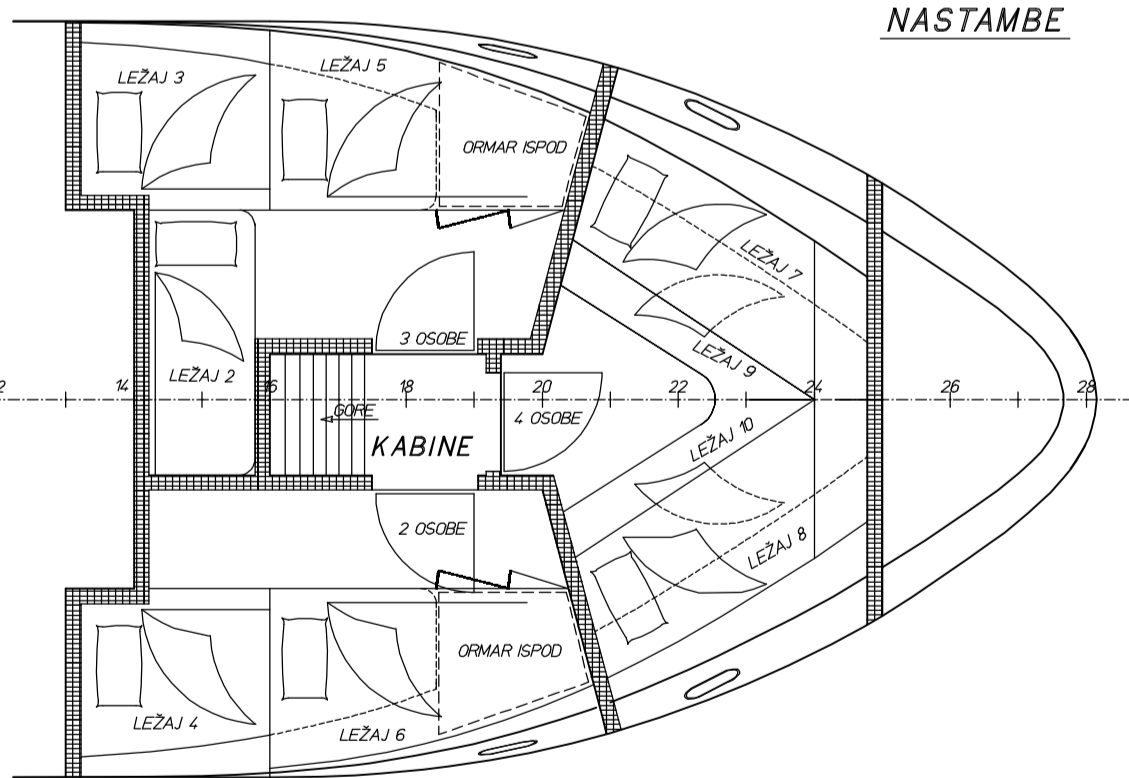
POGLED S PRAMCA



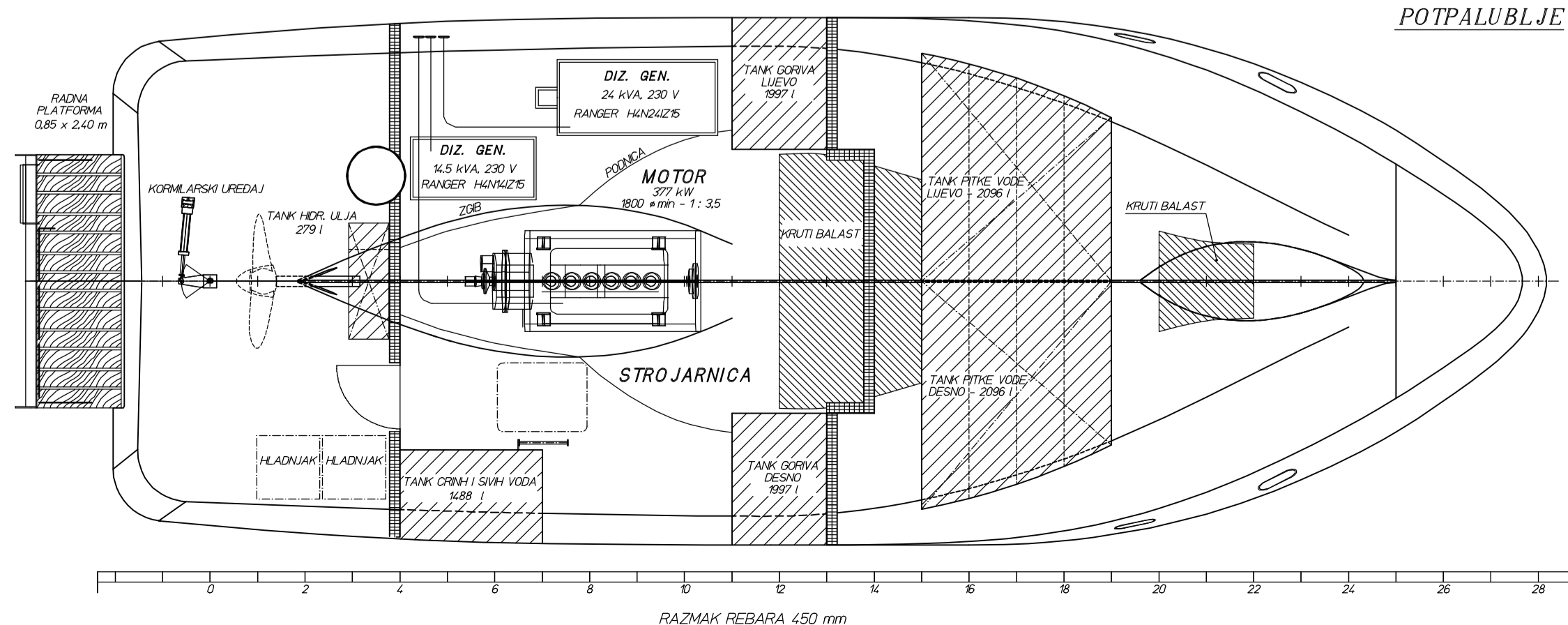
GORNJA PALUBA



NASTAMBE



POTPALUBLJE



GLAVNE DIMENZIJE

$L_{OA}$ - Duljina preko svega	15.55 m
$L_H$ - Duljina trupa preko svega	14.30 m
$L_B$ - Baždarska duljina (0,96xLwl na 0,85 D)	11.94 m
$L_{PP}$ - Duljina između okomica	11.25 m
$B$ - Širina trupa na glavnoj pal.	5.00 m
$B_{MAX}$ - Širina na bokoštiniticama	5.20 m
$D$ - Konstrukcijska visina	2.428 m
$d_{BL}$ - Konstrukcijski gaz	1.5 m
$d_{EXT}$ - Gaz za stanje potpunog nakrcanog broda	1.783 m
$\Delta_{BL}$ - Istisnina na kons. gazu	38.53 t
$\Delta_{EXT}$ - Istisnina za stanje potp. nakrc. broda	51.76 t
gama + privjesci	1.028
$L_{CB}$	-0.045 m

D			
C			
B			
A	Izmjene po želji brodograditelja		05.10.07
Rev.	Opis	Datum	Potpis
Konstruirao	25.01.07	P. PETRUZ dipl. ing.	
Pregledao	25.01.07	R. VAREŠKO dipl. ing.	
Odobrio	25.01.07	R. VAREŠKO dipl. ing.	
Naziv nacrt: <b>OPĆI PLAN</b>			
Mjerilo: 1:50		Listova: 1	
Format: A1+		List: 1	
Gradnja: 060		Rev. A	
Nacrt br.: 1-100-001			